

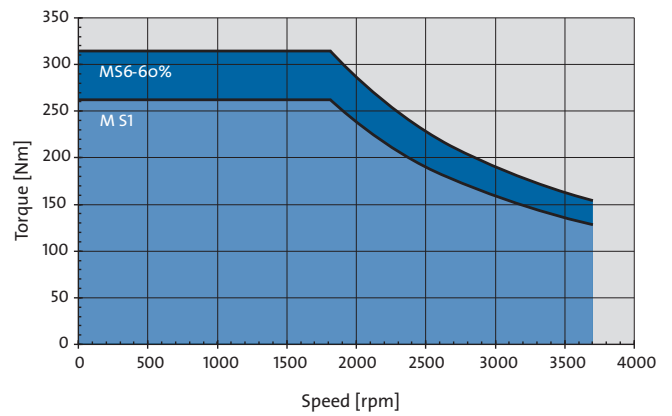
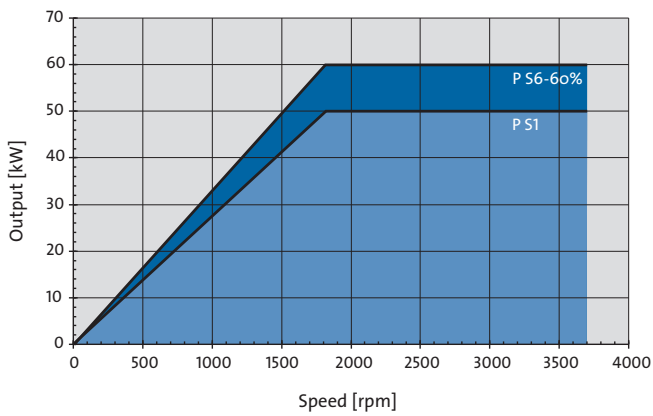
Motor Spindle For External Grinding

FEATURES

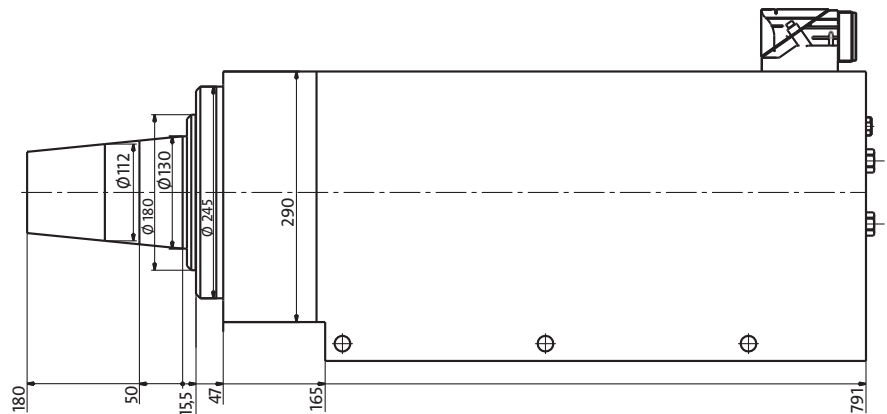
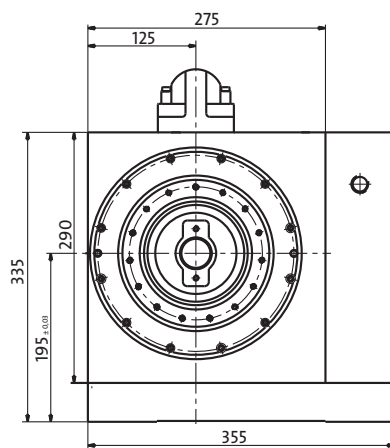
- Synchronous motor
- Encoder
- Speed sensor
- Air purge
- Hybrid bearings
- Permanent grease lubrication

TECHNICAL DATA

Designation	Speed max. [rpm]	Output S1 S6-60% at ... [kW]		Torque S1 S6-60% up to ... [Nm]		... Speed [rpm]	Stiffness radial axial [N/μm]	
		S1	S6-60%	S1	S6-60%		radial	axial
TSE 355cg - 3700/50	3700	50	60	262	318	1820	174	830



DIMENSIONS [MM]



Specifications are subject to change without notice.