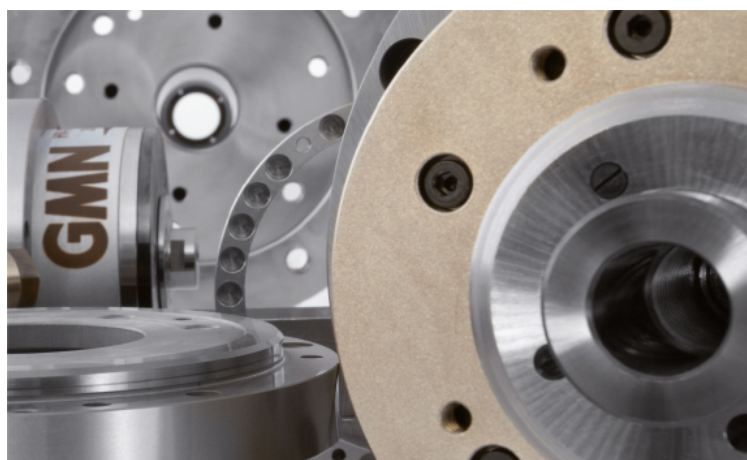
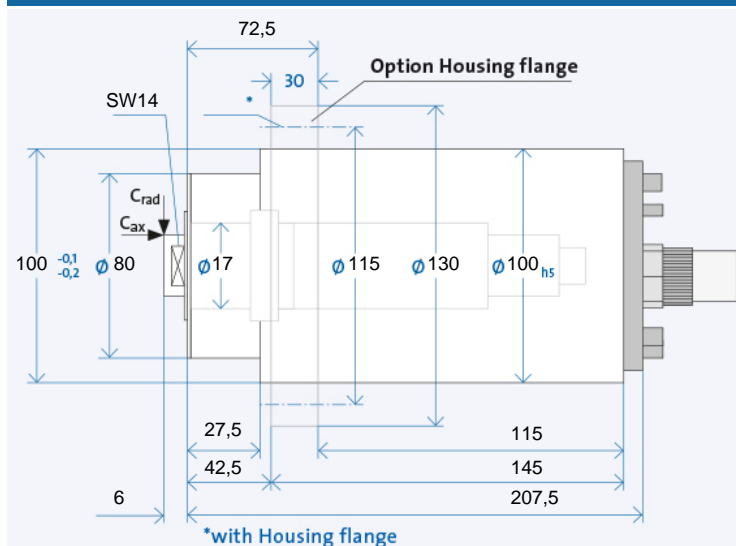


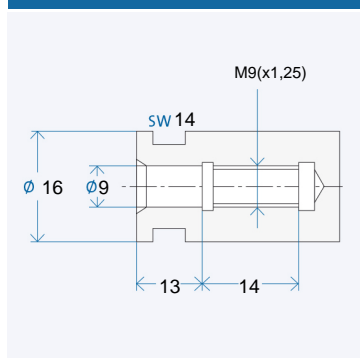
HSX 100 - 90000/3



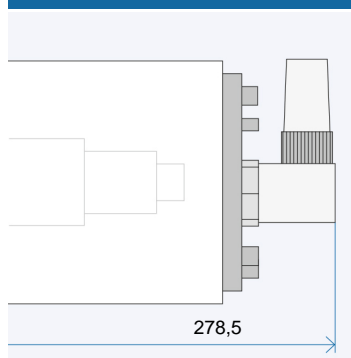
TECHNICAL DATA



FIT HOLES WITH FLAT LAYOUT



ANGLED PLUG OPTION



The data currently provided on the internet apply. Further and detailed information is provided in the GMN 2508 catalogue.

Technical data

Ø Spindle housing	A	[mm]
Speed max.	n_{\max}	$[\text{min}^{-1}]$
Bearing; front	W_1	[mm]
Tool interface		
Ø Flat layout	W	[mm]
Static rigidity		
axial	C_{ax}	$[\text{N}/\mu\text{m}]$
radial	C_{rad}	$[\text{N}/\mu\text{m}]$
Motor realization		
Frequency max.	f_{\max}	[Hz]
Converter voltage ¹⁾		[V]
Power	P_{S1}	[kW]
Torque	M_{S1}	[Nm]
... at speed	n	$[\text{min}^{-1}]$
Current	I_{S1}	[A]
Power	$P_{S6-60\%}$	[kW]
Torque	$M_{S6-60\%}$	[Nm]
... at speed	n	$[\text{min}^{-1}]$
Current	$I_{S6-60\%}$	[A]

Electrical connection

Plug type
Straight plug connection
Coil plug connector
Fixed cable XXm

Coolant feed through the shaft

- Low pressure (du)
- High-pressure (dh)

Sensors

Rotary encoder
Speed sensor

Housing

Cylindrical housing
Cylindrical housing with flange
Block housing
Air-tight seal

¹⁾ Minimum required starting voltage for the frequency converter.

- + Standard
- o Optional
- x Upon request

Ordering information:

Ordering information:
HSX 100 - 90000/3
R is for clockwise, L for counter-
clockwise
+ Desired options

HSX 100 - 90000/3

100		
90000		
17		
D 09/16		
16		
36		
33		
200 V	350 V	-
1500		
200	350	-
2,5		
0,265		
90000		
13	7,5	-
3		
0,318		
90000		
16	9	-

Electrical connection

GA	GA	-
+	+	-
o	o	-
o	o	-

Coolant feed through the shaft

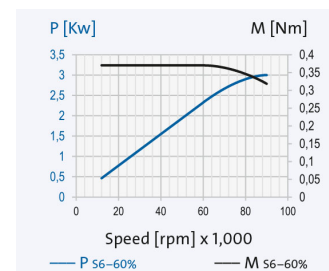
0
-

Sensors

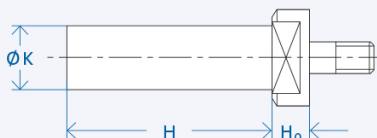
	-
	+

Housing

+
o
x
o



HSX 100 - 90000/3



No processing is permissible in area H_0

Semi-finished goods

GMN semi-finished products allow the individual adaptation of the tool interface for any connections.

d_1	K [mm]	H [mm]
D 09/16	16	84

Ordering information: »Semi-finished goods« [Shaft Ø K] x [Shaft length H] [Interface]

Example: Semi-finished goods 34 x 180 D16/33



Lubrication system

The electronically controlled PRELUB lubrication unit is optimally adapted to the oil-air lubricated GMN spindles and guarantees a long service life.



Cooling system

GMN cooling units ensure precisely adjustable temperature and quantity delivery of the coolant and achieve consistently low operating temperatures.



Cable and plug

Ready-made cables with B048, B049, GA, MAC, D500 and STK plugs are available on request. For the spindle/converter connection, GMN supplies UL/CSA approved electrical cables suitable for use in drag chains.